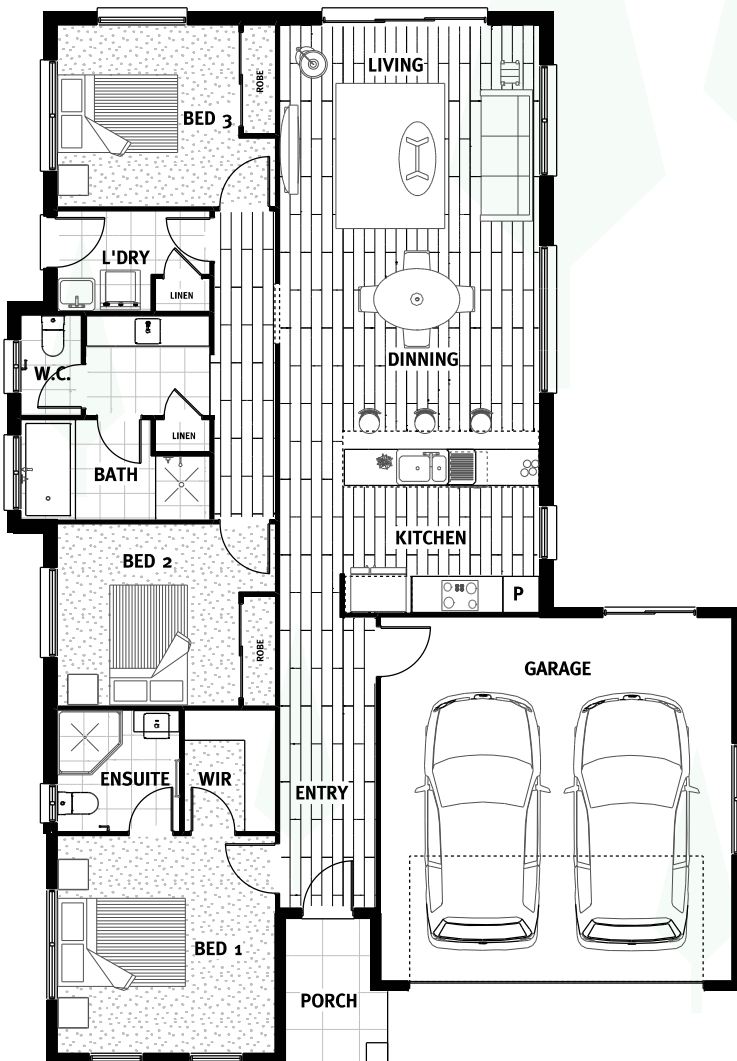


# Betoota 165



Classic Facade



## Betoota 165



Living Area (m2)	124.07
Garage (m2)	37.65
Porch (m2)	3.41
Alfresco (m2)	N/A
Total (m2)	165.13
Total (sqs.)	17.77
Width (m)	12.155
Length (m)	17.405



02 6607 1118 | [cypresshomes.com.au](http://cypresshomes.com.au)

\* The floor plans shown are provided for illustrative purposes only. They are not drawn to scale. The dimensions provided of "width" and "length" are the actual dimensions of the completed house including Alfresco areas. No allowance has been made for any council regulations or estate requirements. It is the homeowner's responsibility to ensure that the house will fit on their land and that all applicable council regulations and estate requirements are met. The image of each façade is for illustrative purposes only and may contain items that are examples of upgrade options which may be included at additional cost, for example: rendered walls, front entry door, outdoor light fittings, all external concrete driveway and paving, floor coverings other than wet areas. Images may also contain items not supplied by Cypress Homes including all landscaping, turf, plants and retaining walls, furniture, wall hangings and specific estate requirements. The image of each façade is for illustrative purposes only and may contain items that are examples of upgrade options which may be included at additional cost, for example: Panel areas, special windows. No allowance has been made for any council regulations or estate requirements.